

Move Your Imaging Forward

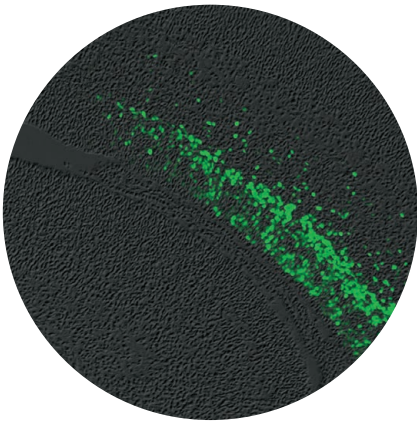




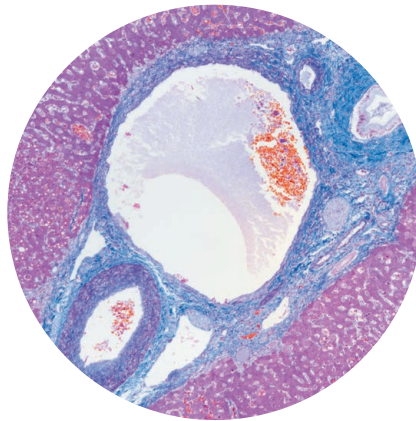
Setting a New Standard in Accuracy and Efficiency

Choose the model you need with the motorization components you want. The combination of strong imaging capabilities with the flexibility to customize the system to your specific application makes BX3 series microscopes powerful research tools.

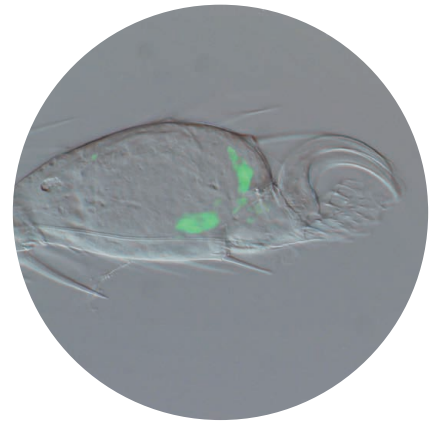
With high performance in fluorescence, brightfield, and darkfield imaging, BX3 series microscopes are easy to use and designed to meet the needs of researchers conducting routine through advanced imaging.



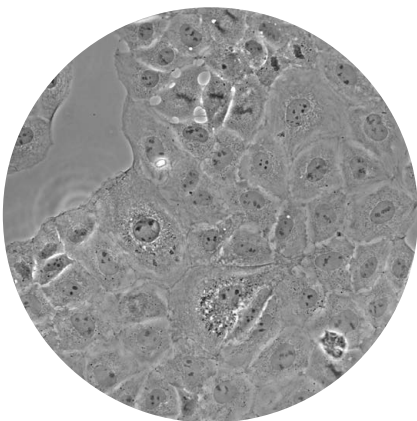
Brain Section of Mouse at Embryonic Day 15 (GFP)



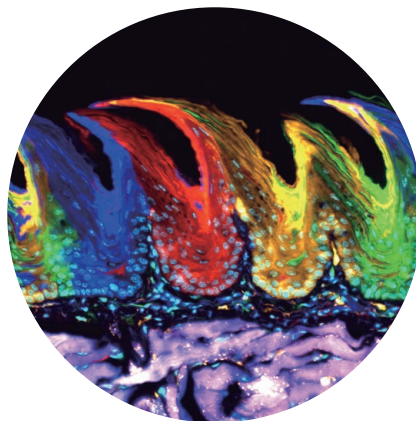
Liver (Azan Stain)



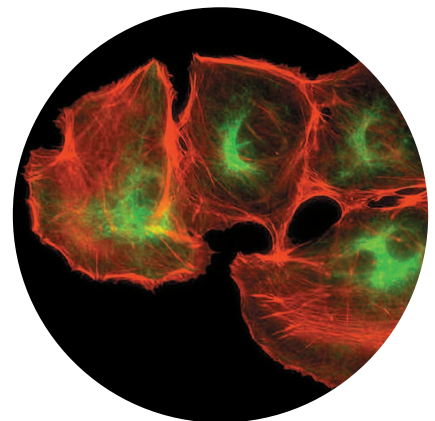
Distal Tip of a Drosophila Limb (DIC/GFP)



NRK-52E Cells (Phase Contrast)



Rainbow Mouse*



NRK-52E Cells (Alexa Fluor 488/Alexa Fluor 546)

*Each interpapillary pit of the tongue is occupied by single-color cells that originate from monoclonal stem cells.

BX63

Fully Motorized and Easy to Use

This fully motorized microscope combines flexibility with the ease of use researchers' demand. It is focused using the nosepiece, enabling the stage to be fixed for added stability. The smooth, silent motorized stage is driven by ultrasonic piezo technology for precise operation.

* cellSens software is not for clinical diagnosis use.

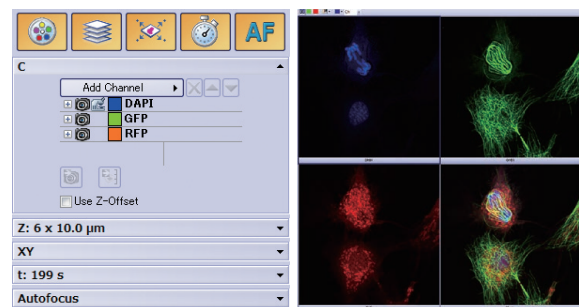
Easily Control Microscope at Your Fingertips

Using the touch panel controller, switch between different observation methods and magnifications with just a touch. Simplify the microscope's operation by using guidance mode to navigate only the pertinent parameters or use full operations mode to access the entire range of settings. Save multiple observation points and conditions in advance, so you can quickly recall previously used imaging conditions.



Fast, Efficient Image Capture with the cellSens

Observation condition data can be entered into the touch panel and XY controller and then automatically transferred to cellSens imaging software. The process manager enables multichannel image acquisition to be fully automated.



Process Manager Setting

Multi-color Images



BX63 intelligent microscope
 DP74 digital camera
 cellSens software

Cultured cell (MDA-MB-231) transduced with multiple fluorescent proteins.

Familiar Focusing and XY Stage Controls

The stage controller (U-MCZ) can be detached from the microscope frame and optimally positioned. Used in combination with the XY controller for our precision ultrasonic stage, it creates a user-friendly workflow, mimicking manual focusing stage operations. The controller's convenient switches enable you to select your observation method, objectives, and mirror unit as well as adjust the intensity or capture images.



Precision XY Control

The ultrasonic stage delivers precision XY control. The XY controller can be mounted on the focus controller for the BX63 microscope and worked like conventional stage handles.



BX53

Flexible and Fully Customizable

The versatile BX53 microscope can be configured to meet the needs of your research. It supports a wide range of fluorescence imaging applications and has advanced features to streamline your workflow. Motorized versions of most components are available, so you can configure the system the way you want it.

Acquire Precise Images with X Line Objectives

X Line objectives offer improved chromatic aberration (400–1,000 nm) for accurate data during multicolor fluorescence observations. Improved image flatness enables you to acquire superior stitched images with less zooming and in a wide wavelength range starting at 400 nm. Their large numerical apertures help provide bright, high-resolution images.



Improve Your Observation with High-Quality Optical Technology

Our UIS2 objectives enhance the quality of the images acquired using the BX53 microscope. Their low autofluorescence glass greatly reduces background noise. And, our novel lens polishing technique produces ultra-thin lenses, improving the microscope's optical performance.





Immunofluorescence image of cynomolgus postimplantation embryo (16 days old), Red:OCT4, Green:SOX11

Upgrade with Motorized Components

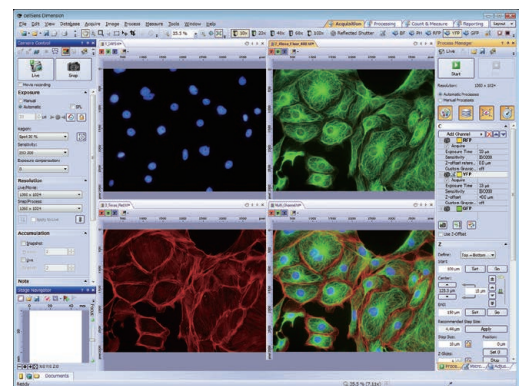
Customize your manual system by converting it to a semimotorized system. Choose from a range of motorized components, enabling you to switch between observation methods and magnifications with just a touch.



Semi-motorized system
Upgrade key components to motorized units

Digital Imaging to Fulfill Diverse Needs

Tailor the system to your application, from advanced research work to stand-alone models for conferencing. Our full line of digital cameras and cellSens imaging software help ensure fluorescence imaging with a high signal-to-noise ratio.



cellSens Imaging Software

Images are courtesy of:

Fumio Matsuzaki, Ph.D., Daijiro Konno, Ph.D.
Laboratory for Cell Asymmetry
RIKEN Center for Developmental Biology
(P.2 top left)

Dr. Shigeo Hayashi, Dr. Kagayaki Kato, Dr. Reiko Tajiri and Mr. Hosei Wada
Laboratory for Morphogenetic Signaling
RIKEN Center for Developmental Biology
(P.2 top right)

Shigenobu Yonemura, Ph.D.
Electron Microscope Laboratory
RIKEN Center for Developmental Biology
(P.2 lower right, left)

Hiroo Ueno, Ph.D.
Department of Stem Cell Pathology, Kansai Medical University
(P.2 lower middle)

Dr. Yuji Mishima,
The Cancer Chemotherapy Center, Japanese Foundation for Cancer Research
(P.4)

Prof. Mitunori Saitou and Dr. Tomonori Nakamura, Anatomy and Cell Biology,
Medicine and Medical Science, Graduate School of Medicine Kyoto university
(P.6 top)

- **EVIDENT CORPORATION is ISO14001 certified.**
- **EVIDENT CORPORATION is ISO9001 certified.**
- **EVIDENT CORPORATION is ISO13485 certified.**
- **Illumination devices for microscope have suggested lifetimes. Periodic inspections are required. Please visit our website for details.**

- All company and product names are registered trademarks and/or trademarks of their respective owners.
- Images on the PC monitors are simulated.
- Specifications and appearances are subject to change without any notice or obligation on the part of the manufacturer.

EvidentScientific.com

EVIDENT™
OLYMPUS

EVIDENT CORPORATION
Shinjuku Monolith, 2-3-1 Nishi-Shinjuku, Shinjuku-ku, Tokyo 163-0910, Japan